

Tensile and compression tests

Homologation tests or other tests according to customer requirements

As an ISO/ICE 17025 accredited testing laboratory, we carry out static tests on seats, seat belts and seat anchorages, underrun protective devices, roof strength, roll bars or cargo securing equipment.

- ✓ **SEAT BELT AND SEAT ANCHORAGES**
- ✓ **HEAD AND BACKRESTS**
- ✓ **UNDERRUN PROTECTIVE DEVICES**
- ✓ **CARGO SECURING**
- ✓ **ROLL-OVER PROTECTION**
- ✓ **H-POINT MEASUREMENTS**

FLEXIBILITY ON THE TEST BENCH

Test set ups can be arranged modularly on our test facility. This enables component tests on replacement structures as well as on entire vehicles.



Static tensile test on a commercial vehicle

YOUR BENEFITS

Testing laboratory accreditation (ISO/ICE 17025)

- ECE-R 14 Safety belt anchorages
- ECE-R 25 Head restraints integrated or removable in vehicle seats
- ECE-R 80 Strength of seats and their anchorages in buses
- ECE-R 58 Rear underrun protective devices (RUPDs)
- ECE-R 73 Lateral protection devices
- EN 12640 Lashing points for cargo securing on intermodal loading units and commercial vehicles
- EN 12642 Securing of cargo on road vehicles - Body structure of commercial vehicles
- EN 1789 Medical vehicles and their equipment (road ambulances)

Competent

From development tests to homologation tests, everything from a single source.

Innovative

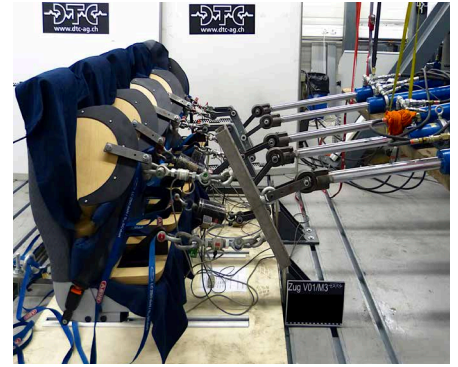
Additional measurement equipment for extended data evaluation and analysis available

Flexible

Short-term availability of the test facilities

TESTING OF SEATS, THEIR ANCHORAGES AND HEAD RESTRAINTS AS WELL AS BELT ANCHORAGE POINTS

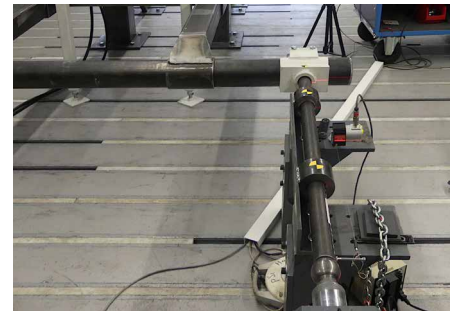
We are able to test your seats and belt anchorage points according to the corresponding standards on our test facility. The loads are applied with hydraulic cylinders at the required points. Furthermore, we perform backrest strength and headrests function tests.



Seat belt anchorage test on a vehicle bench

REAR UNDERRUN PROTECTIVE DEVICES AND LATERAL PROTECTION

We can apply forces up to a maximum of 180 kN at individual pressure points using hydraulic cylinders for testing of underrun protective devices and lateral protection on commercial vehicles.



Rear underrun protection test on a commercial vehicle N2

CARGO SECURING TESTS ON COMMERCIAL VEHICLES

We perform standard compliant tests on commercial vehicle body structures with regard to lashing points or on intermodal loading units.



Test on a body structure of a commercial vehicle

Please do not hesitate to contact us. We will gladly make you an individual offer.



Dynamic Test Center AG
CH-2537 Vauffelin / Biel
www.dtc-ag.ch
info@dtc-ag.ch
Telefon +41 (0)32 321 66 00

