

Component test

Tests on individual components

We perform tests on function, resistance or the energy absorption capacity of substructures by means of impactors, thrown objects, tensile or compression tests, both on dynamic and quasi-static basis independent of the overall system.

- ✓ **QUASI-STATIC LOAD TESTS**
- ✓ **MATERIAL TESTING**
- ✓ **IMPACTOR TESTS**
- ✓ **DYNAMIC STRESS TESTS**

As an ISO / IEC 17025 accredited body, we support you in development investigations or in official approval or certification tests.

QUASI-STATIC TESTS

Verifications based on quasi-static load tests are required for homologation in many areas:

- Belt anchorages and seats for vehicles and aircraft
- Underride protection and load securing devices for commercial vehicles
- Roll-over protection devices
- Load restraint



Quasi-static tensile test of a school bus seat



Testing of an underride guard

YOUR BENEFITS

Certification tests

The performed tests and test documents are globally recognised with our accreditations as a test house.

Development tests

Measurement technology for extended data evaluation and high-speed video recordings possible.

Flexibility

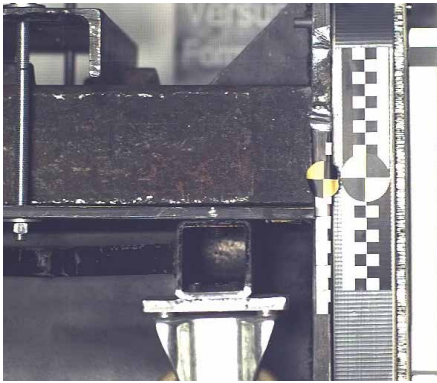
- short-term availability of test facility
- implementation of individual customer specifications.

Innovative

Additional measurement equipment for extended data evaluation and analyses.

DYNAMIC TESTS

The energy absorption capacity of components as well as dynamic load tests can be carried out with our sled facility according to the corresponding standard or customer specifications.



Energy absorption of a Formula SAE impact attenuator



Energy absorption of a wishbone



Deformation element of a rockfall protection system

MATERIAL TESTING

Break and splinter behaviour according to ECE-R 43 (DIN 52306)



Ball-impact test on a snorkel

Please do not hesitate to contact us. We will gladly provide you an individual offer.

IMPACTOR TESTS

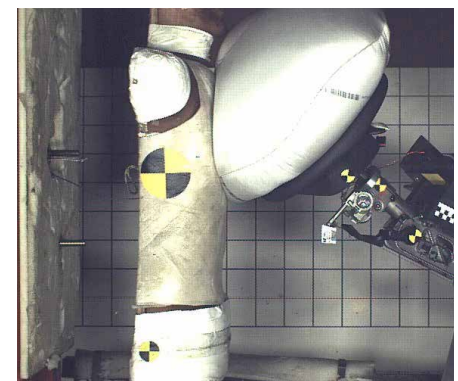
- Pedestrian protection tests: Headform, upper legform or legform impactor according to VO (EG) No. 78/2009 and No. 631/2009
- Testing of interior equipment and head restraints according to ECE-R 17
- Accident impacts on steering mechanism: body block according to ECE-R 12
- Special tests: Thorax, pelvis and foot test bodies.



Pedestrian protection with legform impactor



Pedestrian protection with headform impactor



Body-Block Test

